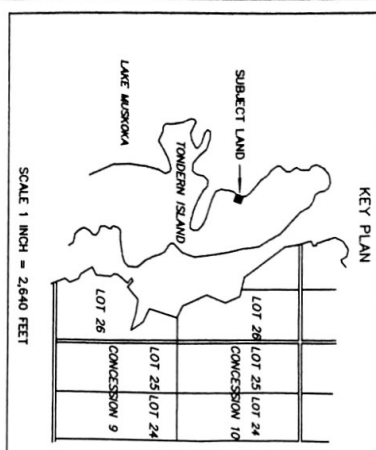


**IMPERIAL**  
DISTANCES AND COORDINATES SHOWN ON THIS PLAN ARE IN FEET AND CAN BE CONVERTED TO METRES BY MULTIPLYING BY 0.3048.

COORDINATES ARE DERIVED FROM SIMULTANEOUS STATIC GPS OBSERVATIONS AND ARE REFERRED TO NATO CONTROL MONUMENT SYSTEM (NAD83) DATUM. COORDINATE VALUES ARE TO RURAL ACCURACY IN ACCORDANCE WITH SECTION 14 (2) OF OREG 218/10.

POINT ID	NORTHING	EASTING
ORP 1	15390407.79	2030165.29
ORP 2	15379910.14	2029328.99
STA A	1538069.25	2029266.72
STA B	1538069.25	2029266.72

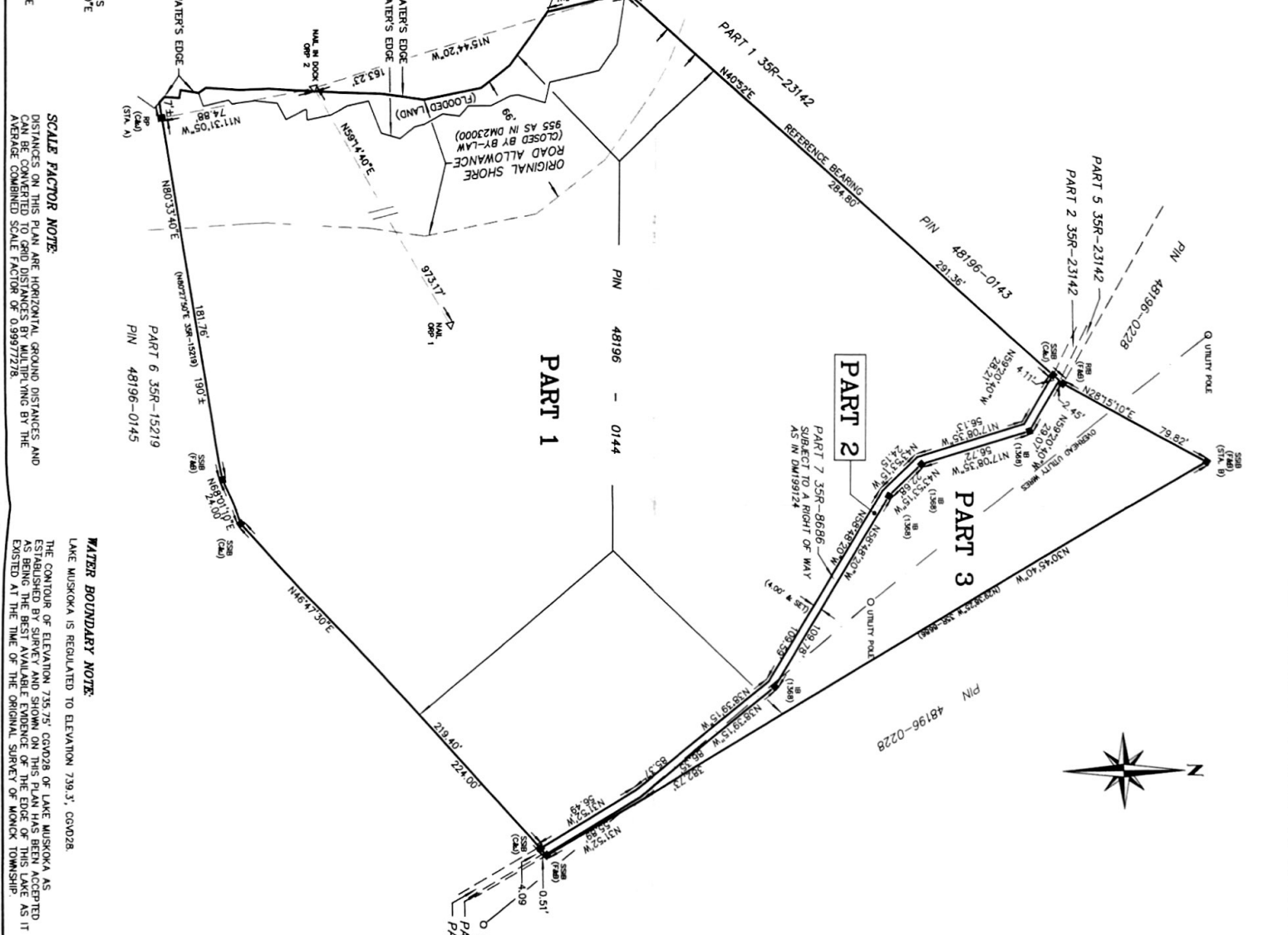
COORDINATES CANNOT, IN THEMSELVES, BE USED TO RE-ESTABLISH CORNERS OR BOUNDARIES ON THIS PLAN.



STATION	BEARING	DISTANCE
A	N113°02'30"W	33.1
B	N112°00'00"W	34.2
C	N107°14'E	56.4
D	N107°14'E	56.4
E	N107°14'E	56.4
F	N107°14'E	56.4
G	N107°14'E	56.4
H	N107°14'E	56.4
I	N107°14'E	56.4
J	N107°14'E	56.4
K	N107°14'E	56.4
L	N107°14'E	56.4
M	N107°14'E	56.4
N	N107°14'E	56.4
O	N107°14'E	56.4
P	N107°14'E	56.4
Q	N107°14'E	56.4
R	N107°14'E	56.4
S	N107°14'E	56.4
T	N107°14'E	56.4
U	N107°14'E	56.4
V	N107°14'E	56.4
W	N107°14'E	56.4
X	N107°14'E	56.4
Y	N107°14'E	56.4
Z	N107°14'E	56.4

**BEARING NOTE:**  
BEARINGS ARE UTM GRID DERIVED FROM SIMULTANEOUS GPS OBSERVATIONS FROM ORP 1 TO ORP 2, SHOWN HEREON, HAVING A BEARING OF N991°44'07"E (81°W LONGITUDE) NAD83 (CSRS), (EPOCH 1997.0).

**ROTATION NOTE:**  
FOR BEARING COMPARISONS, A ROTATION OF 109°59'7" COUNTER CLOCKWISE WAS APPLIED TO PLAN 35R-23142 TO CONVERT TO UTM BEARINGS.



**PLAN OF SURVEY**  
OF PART OF  
**ISLAND B OR TONDERN ISLAND**  
AND PART OF THE  
**ORIGINAL SHORE ROAD ALLOWANCE**  
IN FRONT THEREOF  
(CLOSED BY-LAW 955 AS IN DM23000)  
GEOGRAPHIC TOWNSHIP OF MONCK  
TOWNSHIP OF MUSKOKA LAKES  
DISTRICT MUNICIPALITY OF MUSKOKA  
CHAPPEL, GALBRAITH SURVEYORS LTD.  
ONTARIO LAND SURVEYORS

**SURVEYOR'S CERTIFICATE**  
I CERTIFY THAT:  
(1) THIS SURVEY AND PLAN ARE CORRECT AND IN ACCORDANCE WITH THE SURVEY ACT, THE SURVEYORS ACT AND THE LAND TITLES ACT AND THE REGULATIONS MADE UNDER THEM.  
(2) THE SURVEY WAS COMPLETED ON THE 30th DAY OF OCTOBER, 2016.  
MAY 3, 2016  
D.B. CHAPPEL  
PORT CARLING, ONTARIO.  
ONTARIO LAND SURVEYOR

**LEGEND**  
DISTANCES SHOWN HEREON ARE IN FEET AND  
ELEVATIONS SHOWN HEREON ARE IN FEET AND  
MONUMENTS FOUND ARE AS NOTED:  
DENOTES SURVEY MONUMENT PLANTED  
DENOTES SURVEY MONUMENT PLANTED  
SSB DENOTES SHORT STANDARD IRON BAR  
IB DENOTES IRON BOLT  
RIB DENOTES ROUND IRON BAR  
RIB DENOTES ROUND IRON BAR  
(F&B) DENOTES FITZMAURICE AND BOYER, O.L.S.  
(C&K) DENOTES COOTE, HILEY AND JEMMETT, O.L.S.  
(1368) DENOTES MARTIN KUPERSCHMIDT, O.L.S.

**ELEVATION NOTE:**  
ELEVATIONS SHOWN HEREON WERE OBTAINED BY WATER TRANSFER AND ARE REFERRED TO STATION 00819718429, HAVING AN ELEVATION OF 773.23 CGVD28.

**WATER BOUNDARY NOTE:**  
LAKE MUSKOKA IS REGULATED TO ELEVATION 735.75, CGVD28. THE CONTOUR OF ELEVATION 735.75, CGVD28 OF LAKE MUSKOKA AS ESTABLISHED BY SURVEY AND SHOWN ON THIS PLAN HAS BEEN ACCEPTED AS BEING THE BEST AVAILABLE EVIDENCE OF THE EDGE OF THIS LAKE AS IT EXISTED AT THE TIME OF THE ORIGINAL SURVEY OF MONCK TOWNSHIP.

**SCALE FACTOR NOTE:**  
DISTANCES ON THIS PLAN ARE HORIZONTAL GROUND DISTANCES AND CAN BE CONVERTED TO GRID DISTANCES BY MULTIPLYING BY THE AVERAGE COMBINED SCALE FACTOR OF 0.99977218.

**SCALE:** 1 INCH = 40 FEET

PART	LOCATION	PIN
1	PART OF ISLAND B OR TONDERN ISLAND AND PART OF THE ORIGINAL SHORE ROAD ALLOWANCE IN FRONT THEREOF (CLOSED BY BY-LAW 955, AS IN DM23000).	ALL OF 48196-0144
2	PART OF ISLAND B OR TONDERN ISLAND	
3		

**SCHEDULE**

RECEIVED AND DEPOSITED  
MAY 4, 2016  
"CONNIE CHASSIE"  
REGISTRAR FOR THE LAND REGISTRY  
FOR THE LAND TITLES DIVISION OF MUSKOKA SS

D.B. CHAPPEL  
D.B. CHAPPEL  
ONTARIO LAND SURVEYOR

DATE: MAY 3, 2016  
DATE: MAY 4, 2016

TO BECOME THE PLAN TO BE DEPOSITED UNDER THE LAND TITLES ACT:  
**PLAN 35R-25095**

SURVEYORS' DUPLICATION

DRAWN BY: [Name]  
CHECKED BY: [Name]  
SCALE: 1 INCH = 40 FEET  
FILE: 15-00-105

CHAPPEL, GALBRAITH SURVEYORS LTD.  
ONTARIO LAND SURVEYORS  
2 BAILEY STREET,  
P.O. BOX 496, PORT CARLING, ONTARIO, P0B 1J0,  
(705) 765-5979 TEL